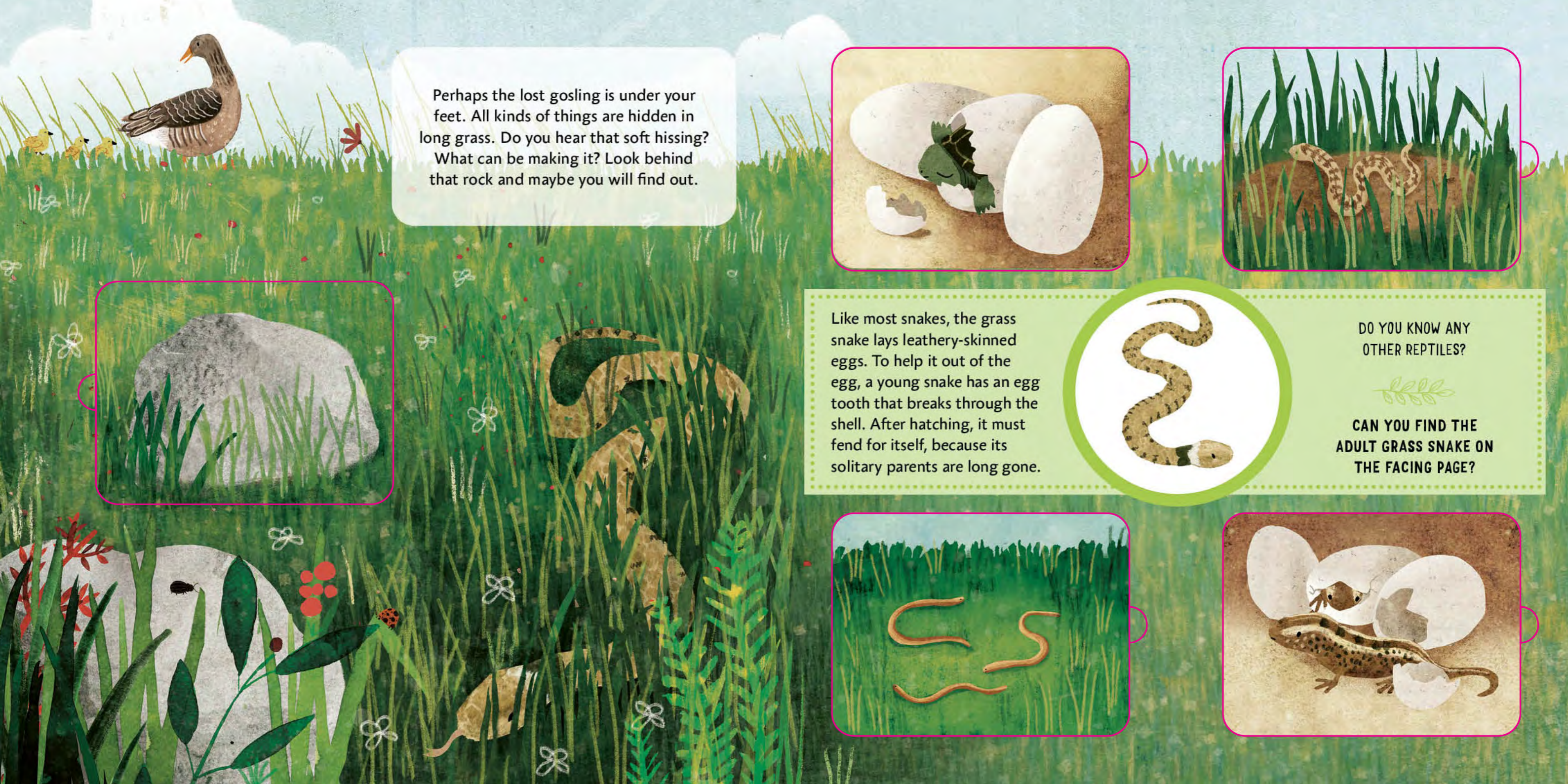


Whose BABY Is It ?

Radka Píro
Carmen Saldaña

CAN YOU
HELP FIND
A LOST
GOSLING?





Perhaps the lost gosling is under your feet. All kinds of things are hidden in long grass. Do you hear that soft hissing? What can be making it? Look behind that rock and maybe you will find out.



Like most snakes, the grass snake lays leathery-skinned eggs. To help it out of the egg, a young snake has an egg tooth that breaks through the shell. After hatching, it must fend for itself, because its solitary parents are long gone.

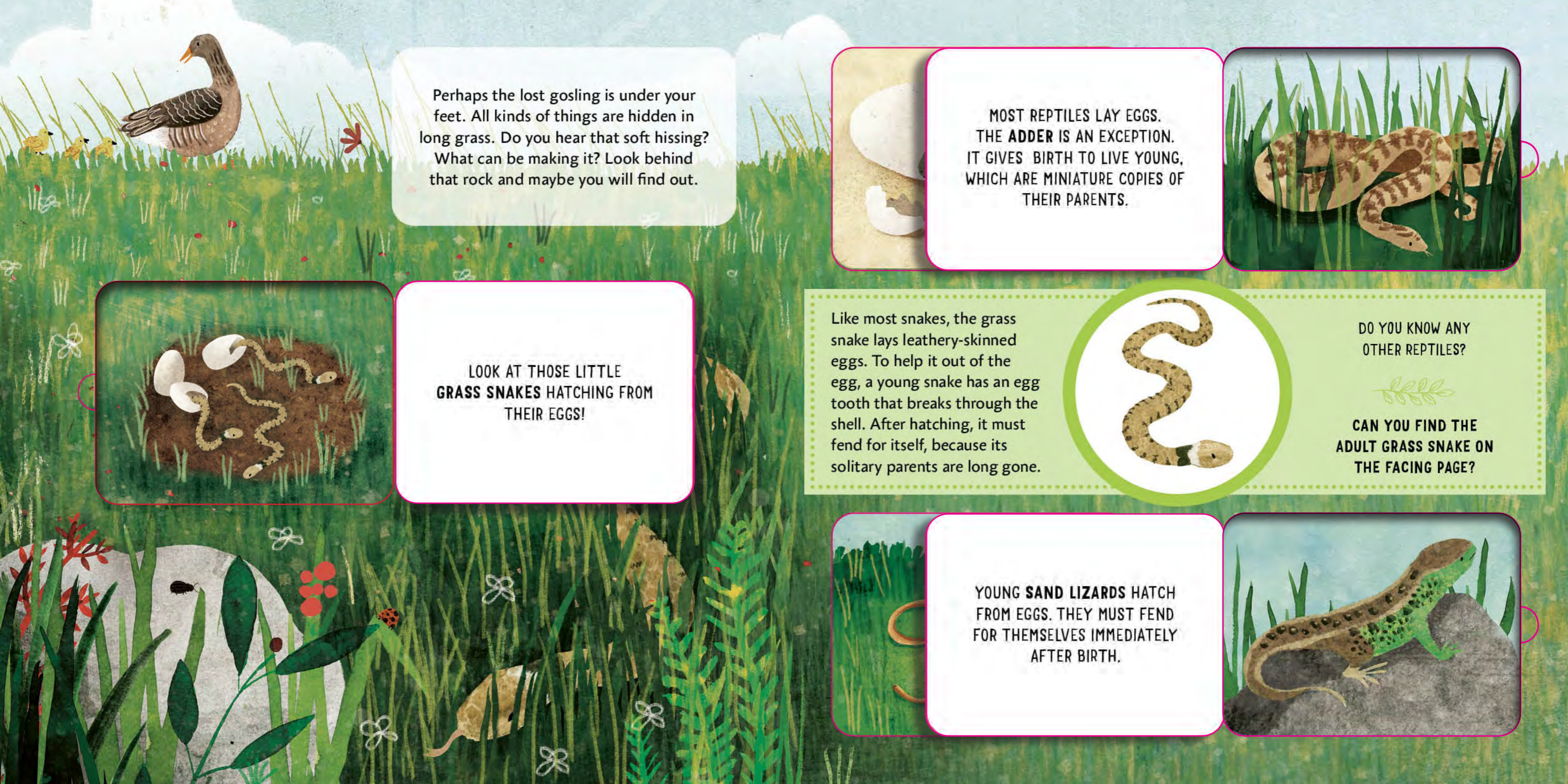


DO YOU KNOW ANY OTHER REPTILES?



CAN YOU FIND THE ADULT GRASS SNAKE ON THE FACING PAGE?





Perhaps the lost gosling is under your feet. All kinds of things are hidden in long grass. Do you hear that soft hissing? What can be making it? Look behind that rock and maybe you will find out.



MOST REPTILES LAY EGGS. THE **ADDER** IS AN EXCEPTION. IT GIVES BIRTH TO LIVE YOUNG, WHICH ARE MINIATURE COPIES OF THEIR PARENTS.



LOOK AT THOSE LITTLE **GRASS SNAKES** HATCHING FROM THEIR EGGS!

Like most snakes, the grass snake lays leathery-skinned eggs. To help it out of the egg, a young snake has an egg tooth that breaks through the shell. After hatching, it must fend for itself, because its solitary parents are long gone.



DO YOU KNOW ANY OTHER REPTILES?

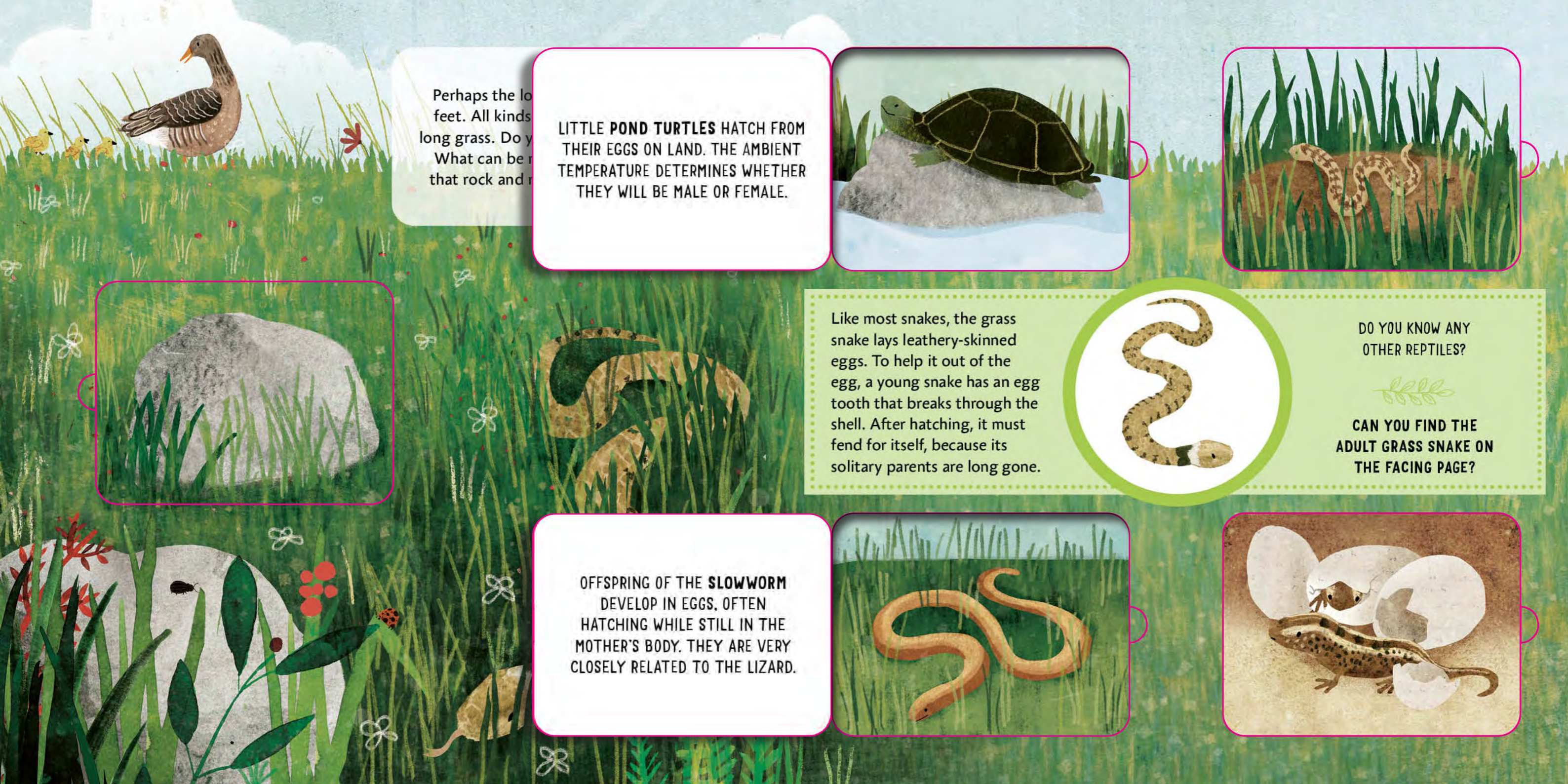


CAN YOU FIND THE **ADULT GRASS SNAKE** ON THE FACING PAGE?



YOUNG **SAND LIZARDS** HATCH FROM EGGS. THEY MUST FEND FOR THEMSELVES IMMEDIATELY AFTER BIRTH.





Perhaps the lo
feet. All kinds
long grass. Do y
What can be r
that rock and r

LITTLE **POND TURTLES** HATCH FROM THEIR EGGS ON LAND. THE AMBIENT TEMPERATURE DETERMINES WHETHER THEY WILL BE MALE OR FEMALE.



Like most snakes, the grass snake lays leathery-skinned eggs. To help it out of the egg, a young snake has an egg tooth that breaks through the shell. After hatching, it must fend for itself, because its solitary parents are long gone.



DO YOU KNOW ANY OTHER REPTILES?



CAN YOU FIND THE ADULT GRASS SNAKE ON THE FACING PAGE?

OFFSPRING OF THE **SLOWWORM** DEVELOP IN EGGS, OFTEN HATCHING WHILE STILL IN THE MOTHER'S BODY. THEY ARE VERY CLOSELY RELATED TO THE LIZARD.





A fawn's spotted coat allows her to hide easily in the woods. The white spots look like places lit by the sun as its rays fall through the trees. A lone fawn may look abandoned, but her parents know where she is and will soon return for her.

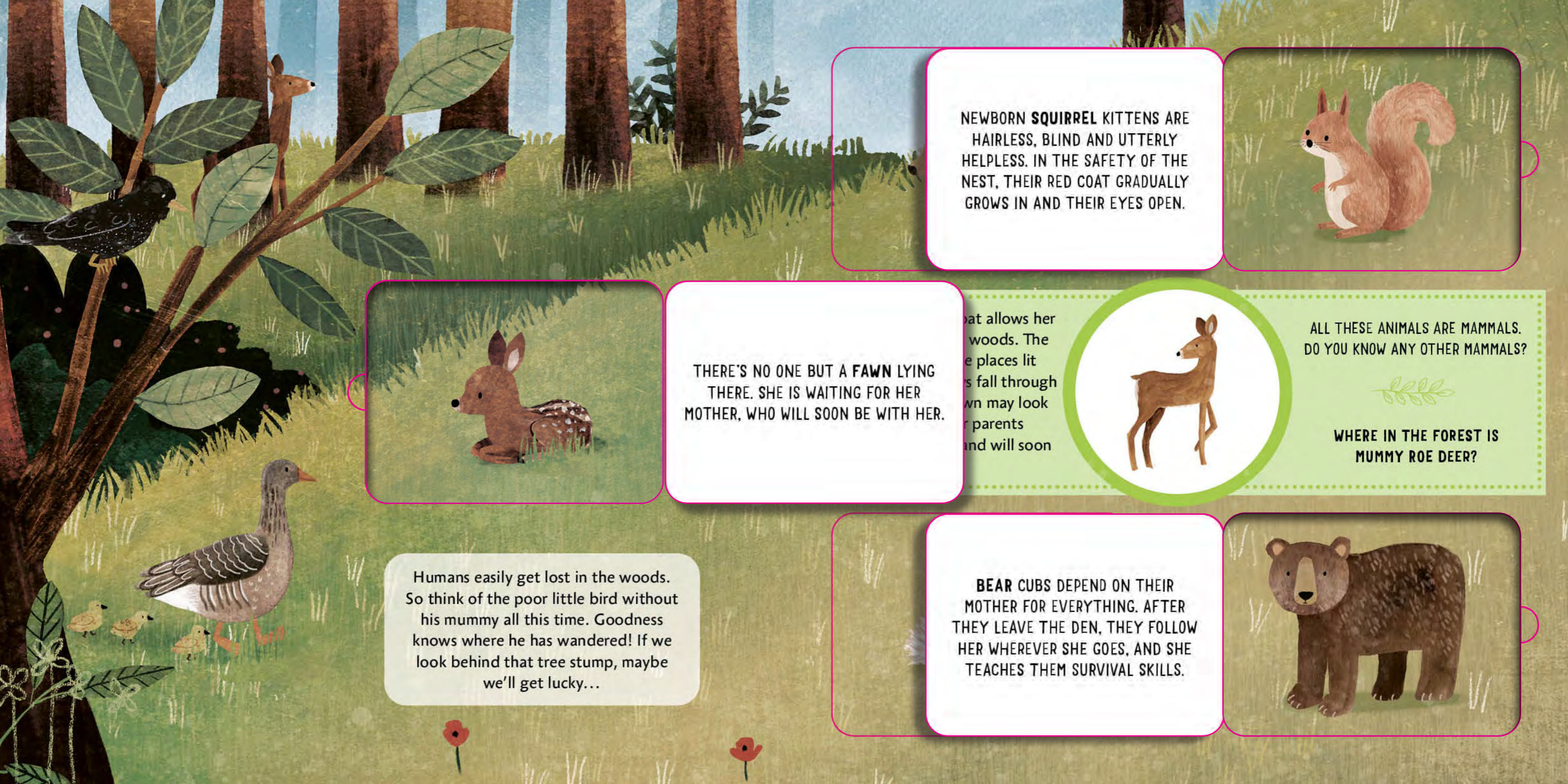


ALL THESE ANIMALS ARE MAMMALS. DO YOU KNOW ANY OTHER MAMMALS?

WHERE IN THE FOREST IS MUMMY ROE DEER?

Humans easily get lost in the woods. So think of the poor little bird without his mummy all this time. Goodness knows where he has wandered! If we look behind that tree stump, maybe we'll get lucky...





NEWBORN **SQUIRREL** KITTENS ARE HAIRLESS, BLIND AND UTTERLY HELPLESS. IN THE SAFETY OF THE NEST, THEIR RED COAT GRADUALLY GROWS IN AND THEIR EYES OPEN.



THERE'S NO ONE BUT A **FAWN** LYING THERE. SHE IS WAITING FOR HER MOTHER, WHO WILL SOON BE WITH HER.



...at allows her
...woods. The
...e places lit
...s fall through
...wn may look
...r parents
...and will soon

ALL THESE ANIMALS ARE MAMMALS. DO YOU KNOW ANY OTHER MAMMALS?

WHERE IN THE FOREST IS MUMMY ROE DEER?

Humans easily get lost in the woods. So think of the poor little bird without his mummy all this time. Goodness knows where he has wandered! If we look behind that tree stump, maybe we'll get lucky...

BEAR CUBS DEPEND ON THEIR MOTHER FOR EVERYTHING. AFTER THEY LEAVE THE DEN, THEY FOLLOW HER WHEREVER SHE GOES, AND SHE TEACHES THEM SURVIVAL SKILLS.



WHY ARE YOUNG WILD BOARS STRIPY, UNLIKE THEIR PARENTS? WELL, THE STRIPES SERVE AS CAMOUFLAGE IN THE WOODLAND UNDERGROWTH.



A fawn's spotted coat allows her to hide easily in the woods. The white spots look like places lit by the sun as its rays fall through the trees. A lone fawn may look abandoned, but her parents know where she is and will soon return for her.



ALL THESE ANIMALS ARE MAMMALS. DO YOU KNOW ANY OTHER MAMMALS?



WHERE IN THE FOREST IS MUMMY ROE DEER?

Humans easily get lost. So think of the porcupine. His mummy all the time. He knows where he is. He looks behind that way. We'll get

THE SPINES OF A NEWBORN HEDGEHOG ARE TOO SOFT TO PRICK ANYONE. IT TAKES TIME FOR THEM TO HARDEN.





Whose BABY Is It?

One, two, three, four... What has happened to the fourth gosling? He wandered off from his mother, and now he is nowhere to be seen! His goose family set out to find him without delay. As they search, they meet many other animal babies and learn about how they live. What does a young perch or a young butterfly look like? Which creature develops in water, then moves to land as an adult? Why are young wild boars stripy? This will be an exciting journey!

If you would like to know how things turn out for the lost gosling, join the goose family on their journey and help find him. On the way, you will learn about the lives of different animal parents and their young.