



Ambulance: How may we help?

10

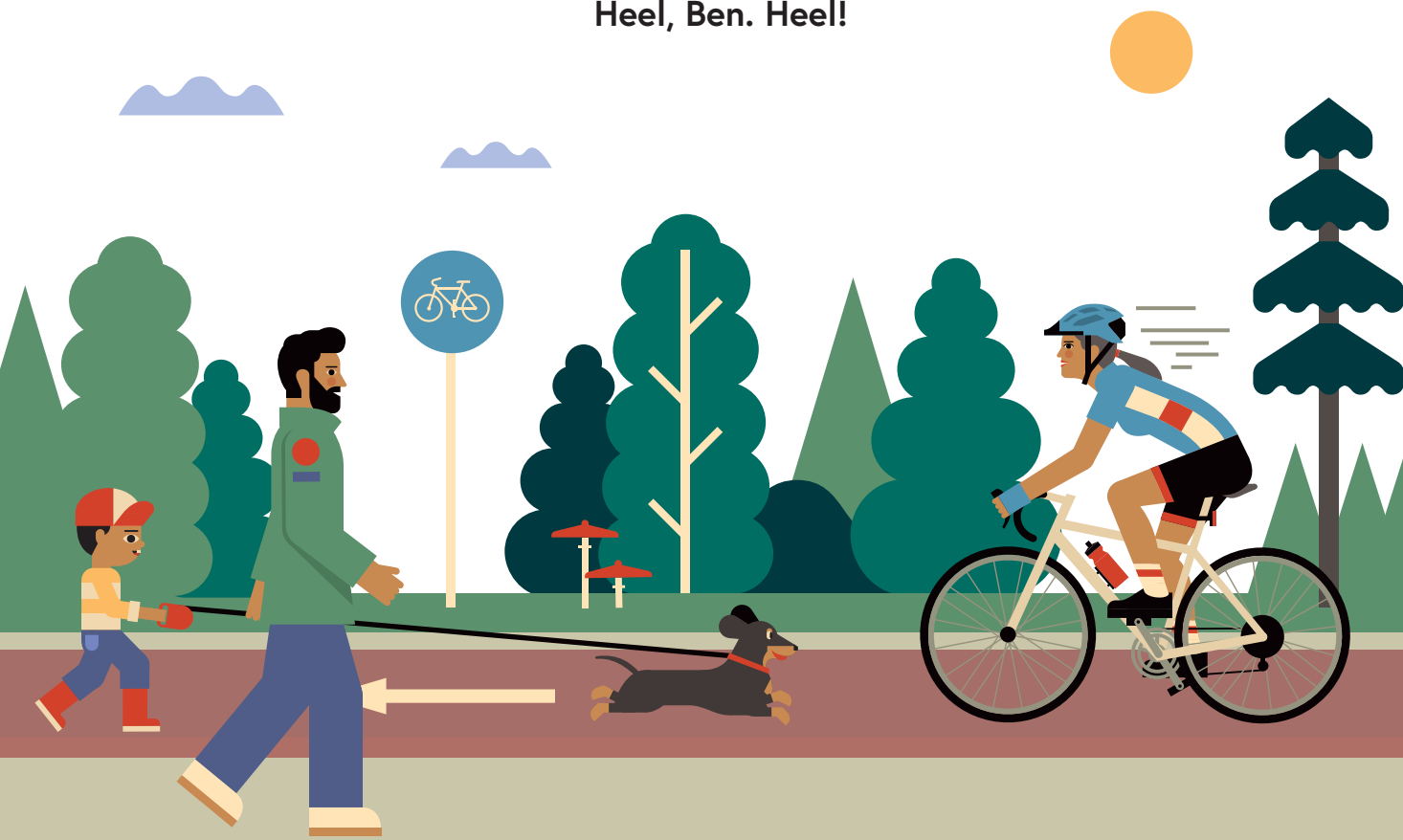


Ambulance:
How may we help?

edika.

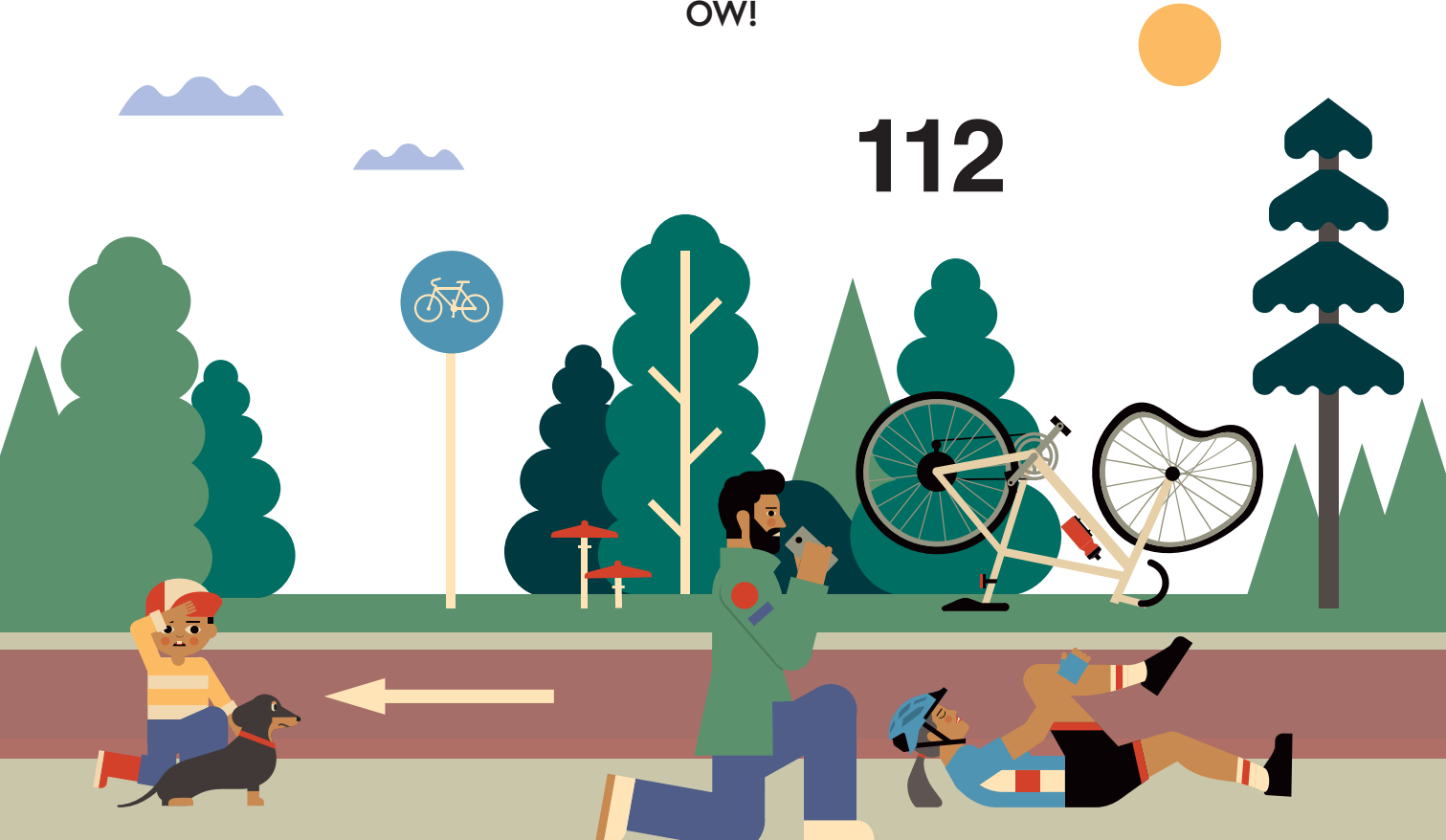


Heel, Ben. Heel!



OW!

112



Hello? Please come to the cycle track beyond the city. A lady has fallen from her bike and hurt her leg.



Could you give us the exact location, sir?



Understood. An injured woman on the cycle track in the park. We're on our way!



Ambulance: How may we help?

Hello? Please help, there's been an accident. Tom and his dad are walking Ben when the naughty dog gets caught up with a cyclist. While Dad calls for an ambulance to help the injured woman, Tom scolds Ben. Then the three of them watch the paramedics at work. Although they don't want to cause a delay, they do get a look inside the ambulance, and find out what goes beep inside.

ABOUT THE BATTERIES

PLEASE NOTE: Before giving this product to a child, remove the sealing strip. Children should use this product only if the battery cover is securely in place. Only an adult should change the battery. The power supply must not be short-circuited.

HANDLING: This product contains 3 pcs 1.5 V AG10/LR54 button cells. Open the battery cover using a screwdriver. New batteries should be inserted by respecting the polarity markings. Put the cover back in place and secure it using a screwdriver. Do not overtighten. Never combine different battery types or new and used batteries. Use only the batteries recommended above (or similar). To avoid damage to the product, remove dead batteries immediately and dispose of them promptly.

DISPOSAL: As this product contains batteries, do not dispose of it with mixed waste. Directives on disposal of electrical and electronic appliances require such appliances to be disposed of separately to ensure their further management by the best available means of recycling and recovery. This approach minimizes negative impacts on the environment and human health resulting from pollution of soil and water by hazardous substances, plus it reduces resources needed for the manufacture of new products and pressure on landfill space. Please help us by not disposing of this product with mixed waste. The crossed-out wheelee bin symbols mean that this product should be disposed of as electrical or electronic waste, and that its batteries should be disposed of separately. When purchasing this product or batteries, an old, used product and/or dead batteries may be returned to the seller. For further ways of battery disposal, please contact your local authority.

WARNING: Not suitable for children under 3 years. Contains small parts. Danger of suffocation. Dispose of used batteries immediately. Keep new and used batteries out of reach of children. If you believe that batteries have been swallowed or inserted into any part of the body, seek medical help immediately.

PLEASE NOTE: Sound is activated by moving the button to the ON position. Sound is deactivated by moving the button to the OFF position. The batteries included are not rechargeable.

Text by Eva Mrázková
Illustrated by Jan Šrámek
Graphic design by Veronika Kopečková
Sound editing by Jiří Lukášek
Managing editor: Eva Mrázková
Technical editing by Jiří Matoušek
Production: Jitka Albrechtová

www.albatrosmedia.eu

All rights reserved.
Albatros Media, 2022



WARNING: Small parts:
danger of swallowing.
Unsuitable for children
under 3 years.

edika.

3 x 1,5 V

