




Petra Bartíková

**TREE**

Magdalena Takáčová







How exciting! One of the largest beetles in the world lives in the hollow of an old tree – the stag beetle. And a hedgehog is lounging around down at the roots of the tree. Are there too many slugs around for Mother Nature? Just give the hedgehog a call, he loves eating them.

Owl, are you sleeping? Quiet, so we don't wake him. He was up all night, hooting in the forest. Look what a big supply of acorns the squirrel has collected for the winter!

The baby nuthatches don't have anything to eat for their beaks. What are they going to do! "Food, please, food please!" they call out. Daddy nuthatch is looking for food, climbing upside down along the tree trunk.

Buzz! Buzz! What is it? Bees are flying back from the meadow. They're full of pollen, they have it everywhere – on their legs, even on their heads. They store the pollen grains into the cells of the yellow combs in the hive hidden inside the hollow of the tree.





## FLOWERS & SEEDS

Pollen and nectar, from flowers which grow on trees, are extremely important for bees in particular. They make honey from pollen and additional ingredients. The seeds of trees are also an important source of food for birds.

## THE TREE FRUITS

While fruit trees bear apples, pears or cherries, trees along lanes, in parks and forests provide acorns, beechnuts and chestnuts... Forest animals like to eat them.

## THE LEAF MINER

Not only polypores, but also various insect larvae, harm trees. The Horse-Chestnut Leaf Miner is a small, modest caterpillar which likes eating chestnut tree leaves. Then the leaves grow brown and fall off the tree.

## OLD TREES

Beetles of all kinds love the wood of an old rotten tree. The trees not only have food but also places to hide. The older the tree, the rarer and the more important for nature. That's why it's so important to cherish almost every old tree in the woods.

## HOLLOW TREES

Trees with holes in their trunks are known as hollow trees. The hollow in the trunk is usually dug out by woodpeckers in order to have a place to nest for a period of time. Usually an owl moves into the empty opening and builds its nest there.

## BAD MUSHROOM

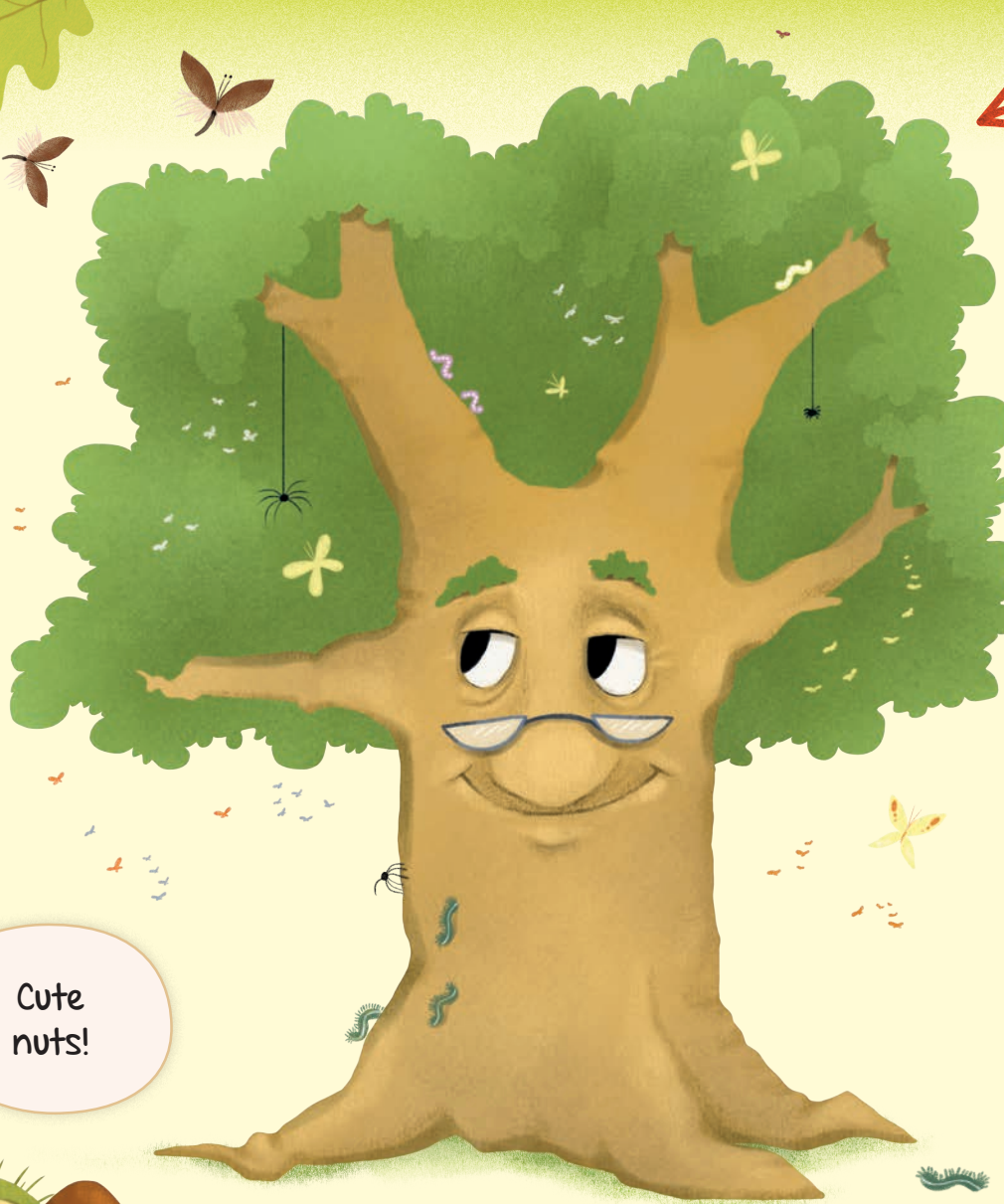
This pheasant's back mushroom grows out of wood. Although it looks quite important, it doesn't do the tree any good. It actually does the opposite, weakening the trunk.

## SMALL HELPERS

You can occasionally spot a mushroom, such as the Summer Cept, down amongst the roots of trees. They are actually good for them. These mushrooms draw water and nutrients from the ground.

## SWEET MISTLETOE

This green plant with white berries grows on trees throughout the world. Perhaps you even know it, people in some countries use mistletoe to decorate their homes.



Cute nuts!





# TREE

Written by Petra Bartíková

Illustrated by Magdalena Takáčová

The wind is blowing high above in the crown of the tree. Branches are slapping against one another, and somewhere below, at the large crack with beetle larvae inside, someone is knocking on the trunk of the tree. A spider, hanging on a little thread, has just woven another spiderweb. And a cuckoo bird is singing in its nest. Coo-coo! That's what it's like on a tree every day. One oak tree is like a house, with lots of animals, big and small, living in it. You might know some of them already. So come on in, let me take you inside, on a visit to an old oak tree...

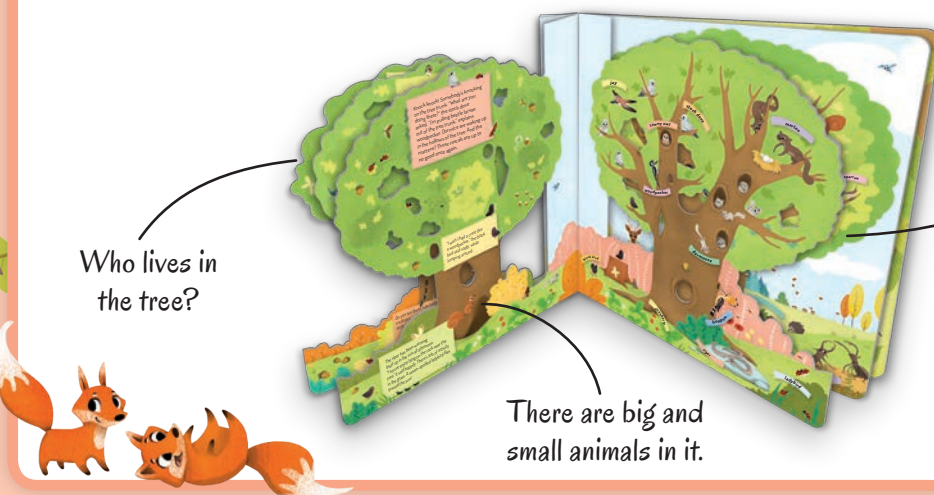
Hi there!

Get to know  
**THE TREE**  
and life  
in it.

Who lives in  
the tree?

There are big and  
small animals in it.

Visit an old  
oak tree!



CE

© Designed by B4U Publishing, 2017  
member of Albatros Media Group  
Author: Petra Bartíková  
Illustrator: Magdalena Takáčová  
[www.b4upublishing.com](http://www.b4upublishing.com)  
All rights reserved.

WARNING: CHOKING  
HAZARD Small parts. Not  
suitable for children under  
36 months.

ISBN + EAN