

CHOOSE A **PLANT**

... and Learn
to CARE for It

including
Plant-o-meter

How to Care for a Plant

Do you have what it takes to grow cress, marjoram, lavender, tomatoes, or maybe a coffee tree ... You think you do? Fantastic! Growing your own plant from a seed is an amazing thing to do. In this book, you'll read about how to do it. First you need to find out what kind of plant grower you are.



To begin with, a few pieces of general advice



1. Check your plant regularly

As a plant can't talk, you have to check regularly that it has everything it needs.

2. Ask about what it needs

Every plant has its own special requirements. If you don't know what these are, ask. The florist will be happy to advise you.

3. Watch out for pests

If you discover that your plant has been attacked by pests, quickly move it away from other plants and ask an adult how to get rid of the pests.



4. Care for it in summer and in winter

Just like people, plants need different things in summer and in winter. So adapt the way you care for your plant according to the season.



5. Some of them poisonous

Find out whether the plant you are growing is poisonous. If it is, make sure that it doesn't come into contact with animals.



Did you get **12 points or more?**
Move the pointer to the blue arrow.

Did you get **between 9 and 11 points?**
Move the pointer to the yellow arrow.

Did you get **between 5 and 8 points?**
Move the pointer to the orange arrow.

Plant:

BONSAI

Species: jade plant, pomegranate, desert rose

Photograph:



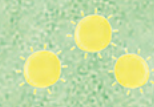
Details:



Growing these is difficult; you need to learn how to do it.



No bonsai should ever be completely dry.



As bonsai need lots of light, keep them on the windowsill.



Cared for well, these plants last for many years.



**A plant with charm.
A miniature tree in
a bowl. Two descriptions
of a bonsai, which you
can grow at home. When
you start sculpting yours,
a work of art will be born!**



Growing Them

In a dry, warm flat, a bonsai needs frequent watering – slowly and intermittently, so that the water soaks in properly. Use water that has been standing for a while. The bonsai should never be completely dry. How can you make sure that it isn't? The lighter the soil, the more water it needs. Put the plant on the windowsill, where it will get plenty of light. Warm air from radiators is bad for it.



Using Them

Make yourself a Japanese garden. What's that? A quiet place with bonsai, soft grass and moss, a flowing river, rocks and a pond. It will be a pleasure for your toys, too, to play in a Japanese garden. Why only ever take them to the zoo?

**One more snip and
your bonsai will be perfect**

It is said that a bonsai is like the person who tends it. This explains why it may look playful, combative or peaceable, for instance. Remember when you're sculpting it that it's no longer just a plant – it is becoming your own work of art. By the way, there are various legends about different trees. Find out what they say about yours!

*My bonsai
is going to be
playful.*



Our Tip

Do you know what a Saikei planted landscape is? It's bonsai with various stones, moss, little houses, water and human figures. It represents a place in nature that may not be real. Create your own Saikei!



Learn More ...

**Where did these little trees
actually come from?**

The art of tending bonsai originated in China, from where it spread to Japan and other countries. The Japanese fell head over heels in love with it. They would sit in silence, watching old trees, their trunks and their branches. Only after that would they start to sculpt their own bonsai.



**The smallest
and the largest bonsai**

Bonsai come in different sizes. The smallest is a centimetre tall – making it about as big as the last joint of your finger. And the largest? Well, they can be two metres tall! And so heavy that they need to be carried by more than one person.



Getting Them

Get your bonsai from a garden centre. Suitable choices are the jade plant (*Crassula ovata*), the pomegranate (*Punica granatum*) and the desert rose (*Adenium obesum*). But be careful with the latter – it's poisonous.



How to sculpt a bonsai





CHOOSE A PLANT

... and Learn
to CARE for It

Written by Katarína Belejová
and Petra Bartíková
Illustrated by Aneta Žabková

Sprouts, vegetables, herbs, cacti, citrus fruit, bonsai and carnivorous plants. Learn how to grow them. Make a jungle for your toy cars and dolls on the windowsill at home. This book, illustrated by Czech artist Aneta Žabková, will tell you all the main things you need to know, not least where to get your favourite plants and how to care for them so that they don't wither. And you'll find out about all the things you can do with them in a flower box at home.



Booklets and
foldouts!

Plant-o-meter
inside



ISBN



WARNING: CHOKING HAZARD
— Small parts. Not suitable for
children under 36 months.

b4u publishing
www.b4upublishing.com

© Designed by B4U Publishing,
member of Albatros Media Group, 2016.

