



III The Undersea World



THE UNDERSEA  
WORLD

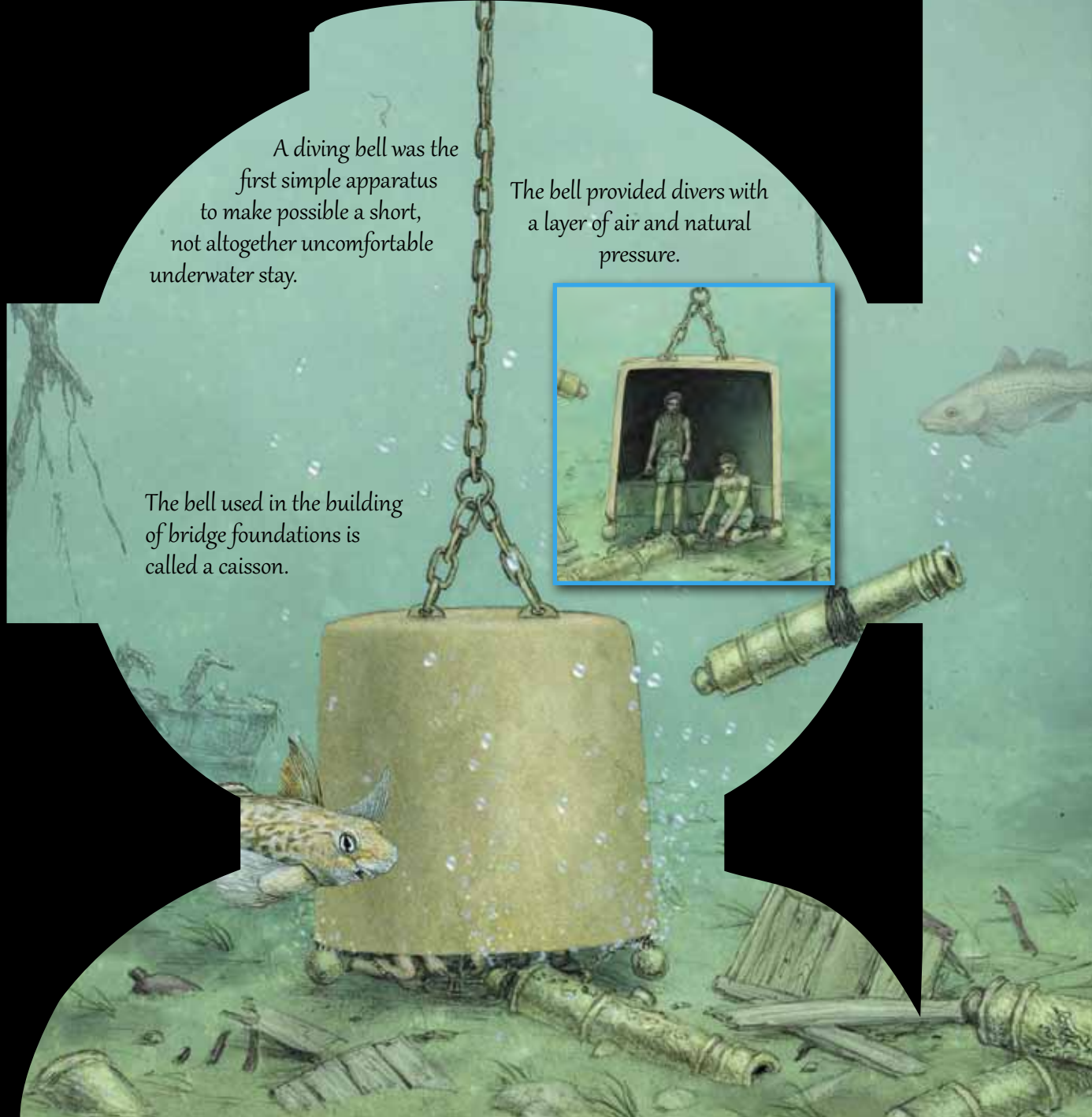


A diving bell was the first simple apparatus to make possible a short, not altogether uncomfortable underwater stay.

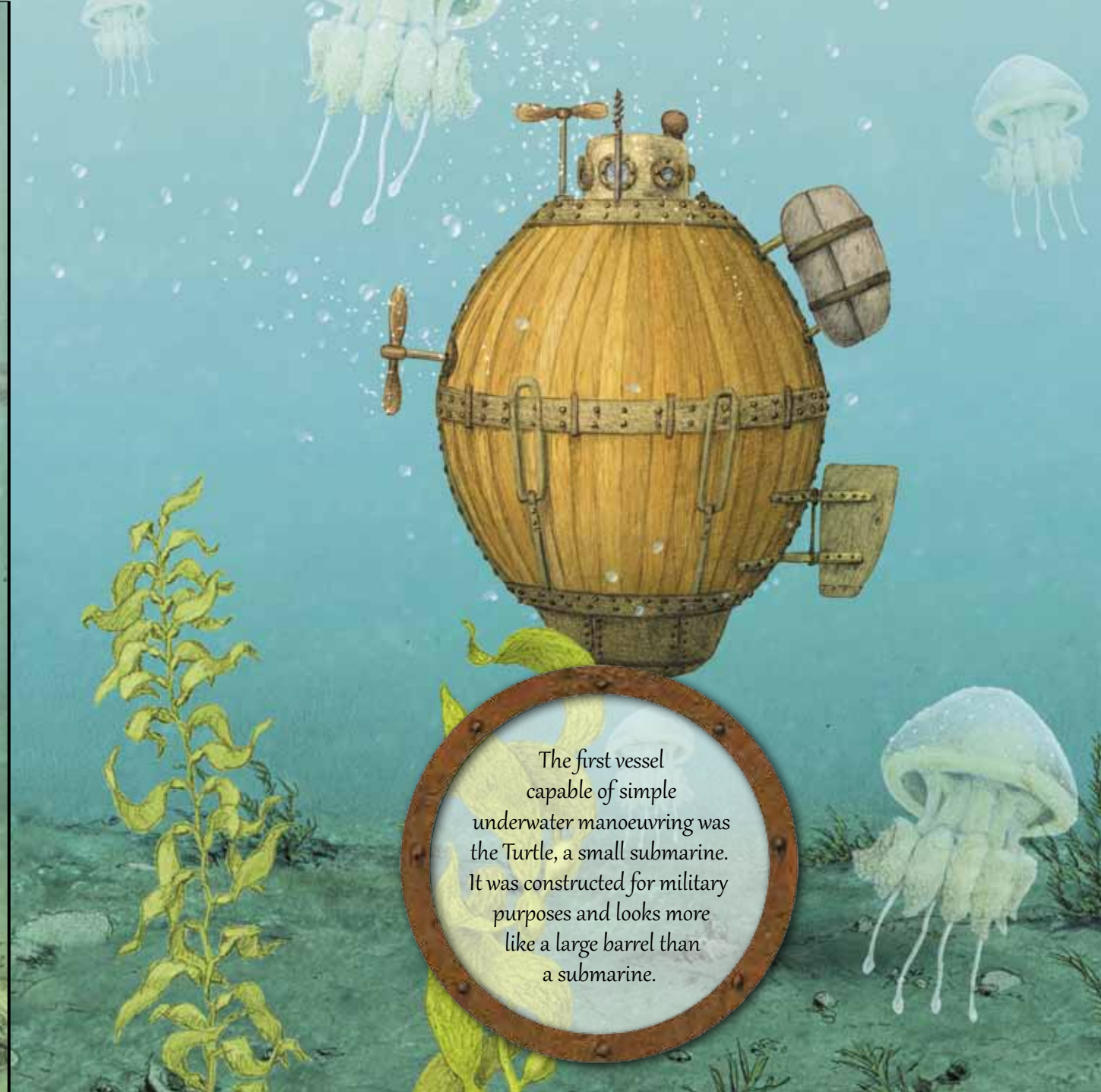
The bell provided divers with a layer of air and natural pressure.



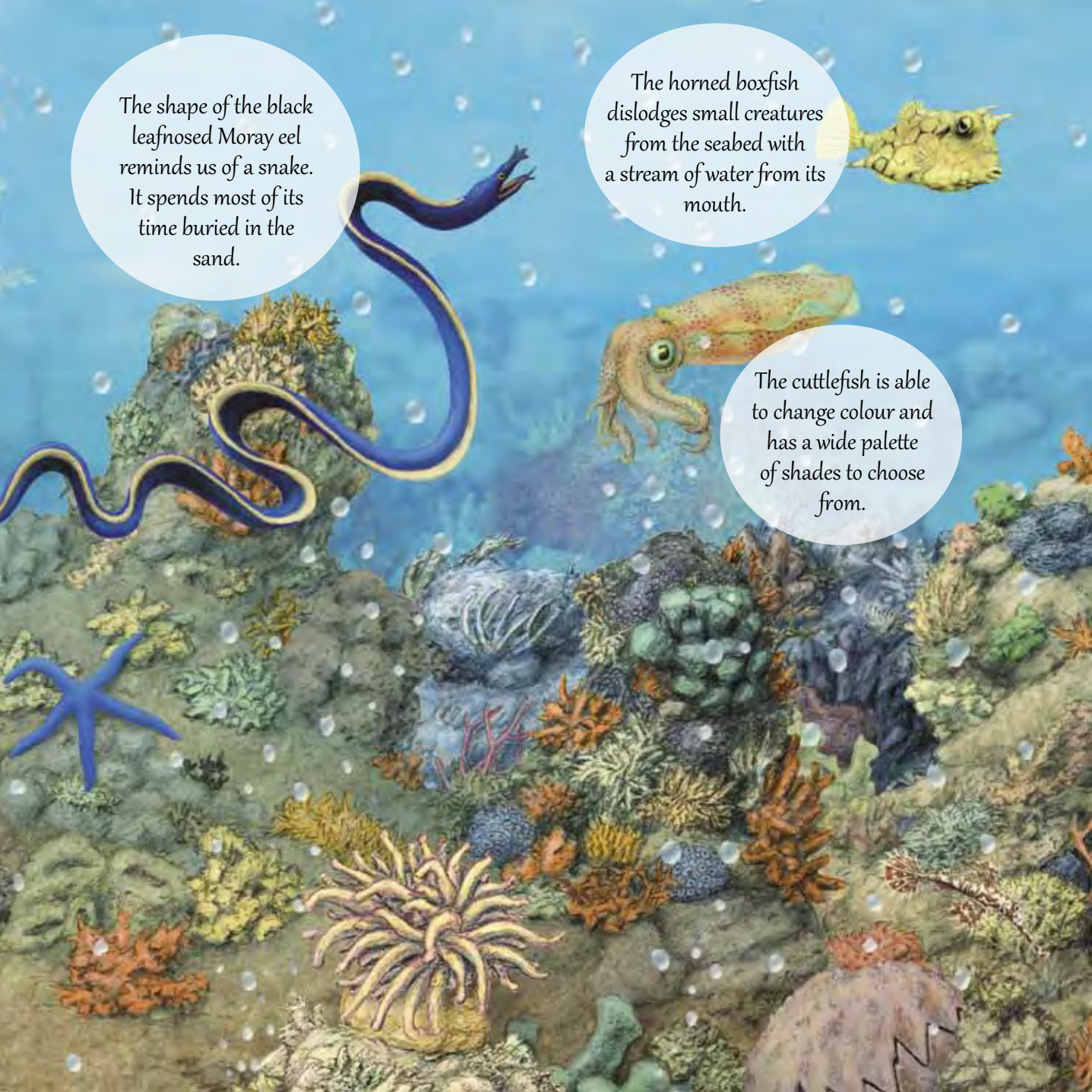
The bell used in the building of bridge foundations is called a caisson.



The first vessel capable of simple underwater manoeuvring was the Turtle, a small submarine. It was constructed for military purposes and looks more like a large barrel than a submarine.



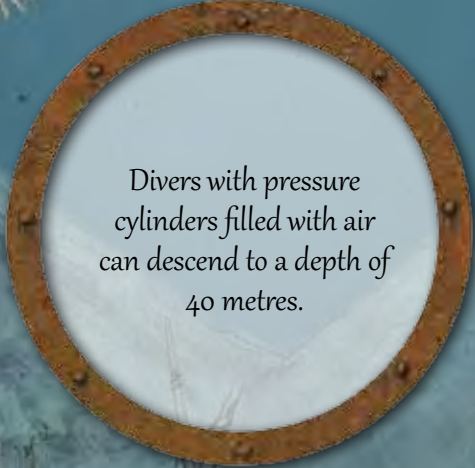




The shape of the black leafnosed Moray eel reminds us of a snake. It spends most of its time buried in the sand.

The horned boxfish dislodges small creatures from the seabed with a stream of water from its mouth.

The cuttlefish is able to change colour and has a wide palette of shades to choose from.





Divers with pressure cylinders filled with air can descend to a depth of 40 metres.






## The Undersea World

Descend with us into the seas and oceans, in which all life on Earth has its origin and which even today have not been fully explored. Discover which creatures live at which depths and how we succeed in conquering a region so difficult to reach.



 b4u publishing

© B4U Publishing, 2010  
Designed by B4U Publishing s.r.o.  
Illustrations Pavla Kleinová  
[www.b4upublishing.com](http://www.b4upublishing.com)

ISBN et EAN